

the
TEXTILE
EYE

Report No. 26 - Fall 2025

INSIGHTS FOR INSPIRED DESIGNERS

**DESIGNED
TO SUSTAIN**

Contract + Hospitality Updates

**INTERNATIONAL
FOLK ART MARKET**

Appreciating Artisanal Objects

GATHERED TONES

Color for Commercial Spaces



Fall 2025

DESIGNED TO SUSTAIN



Theme

Grown from Seed

Nature's bounty remains a perennial inspiration, with florals and botanicals flourishing across contract and hospitality textiles. Traditional motifs bloom across walls, upholstery, and carpets, while modern interpretations scale flowers to dramatic proportions or distill them into simplified silhouettes. Designers draw from global references, artistic renderings, and layered techniques, imbuing this evergreen theme with fresh vitality.

LOOKS

Artistic effects: brushstrokes, ink outlines, pencil sketches, watercolor washes & embroidered accents

Modernized with simplified silhouettes, geometric overlays & variegated weaves

Maximalist, tightly-packed floral compositions

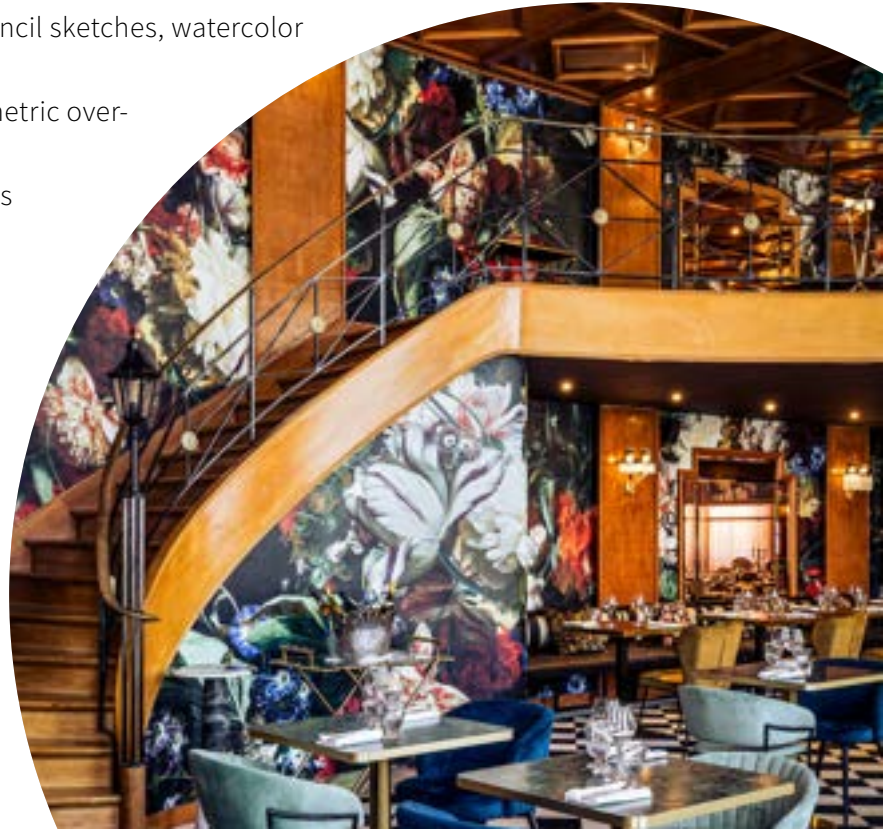
Tableaus of vines & climbing flowers

Turkish pottery & Jacobean motifs

Lavish florals & stylized blooms

Lush, tropical leaves

Jeanne & the Forest x Château de Montvillargene





Brentano



DesignTex



Momentum



Seema Krish



Francesca Müller x Y-Oz



Marta Cortese for Coordonné



Victoria-Maria Geyer x Cortijo Genesis



Spoonflower



Eskayel



Marta Cortese for Coordonné



Wall&decò x Antonella Guidi



Carnegie



Calico Wallpaper



Wall&decò x Ines Porrino



Wall&decò x Maria Gomez Garcia



Wall&decò x Lorenzo de Grandis



Maison Numéro 20 x Le Soleia



Weitzner

the TEXTILE EYE



Eskayel





Mayer Fabrics x Hyphyn



Hyphyn

Biodegradable vinyl has arrived with a big bang. Hyphyn from Nassimi combines commercial-grade durability with biodegradability, hitting over 90% breakdown in two years when exposed to landfill bacteria without creating microplastics. A sustainable material that's both viable and widely available, Hyphyn is being embraced by the industry, used in collections from Arc-Com, Stinson, Fabricut Contract, Kravet Contract, Mayer Fabrics, Momentum, Pallas Textiles, and Wolf-Gordon, among others.

the TEXTILE EYE







Shaw Contract



Emma Hayes



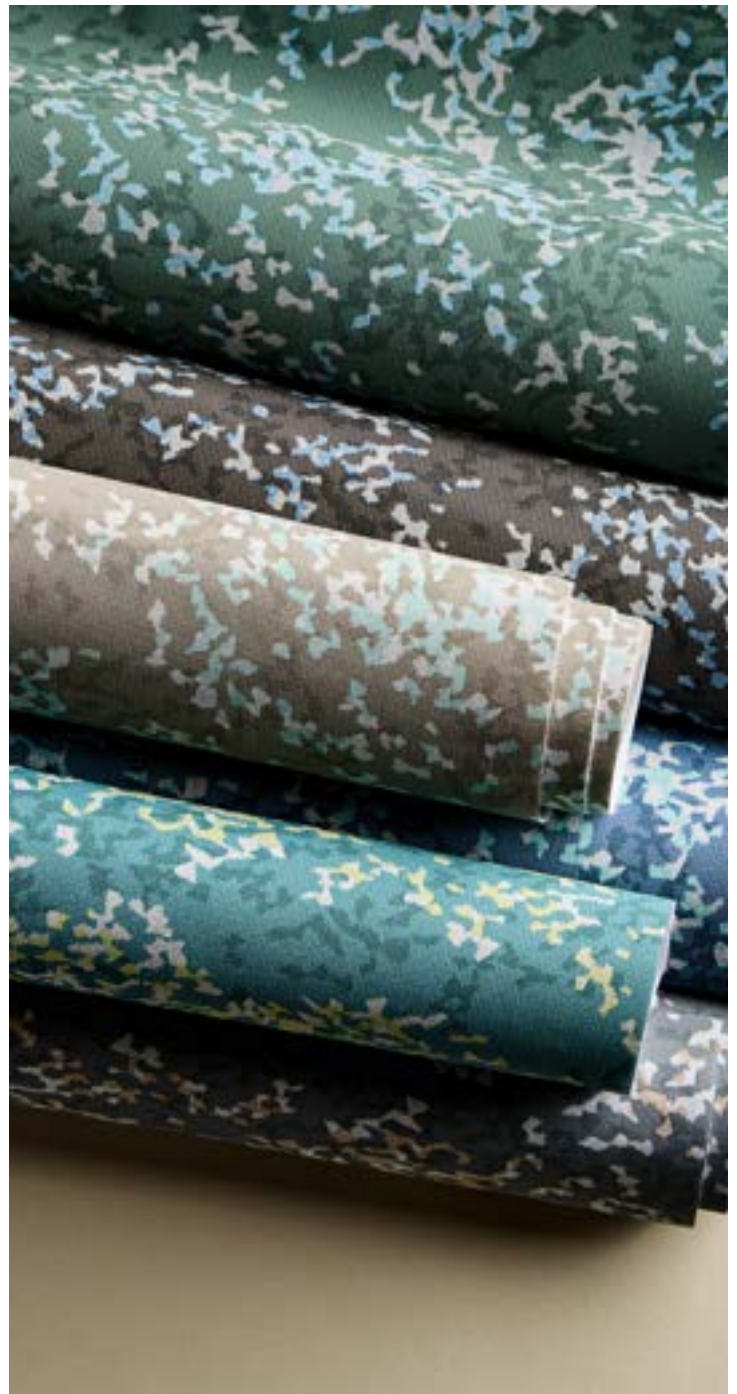
Wall&decò x Lorenzo de Grandis



Mayer Fabrics



Pallas Textiles



Momentum



HOLLY HUNT



ECONYL by Aquafil

the TEXTILE EYE



Signature Flooring x Stacy Garcia Design Studio



Durkan



LebaTex



Kravet Contract x Crypton

Theme

Ruled by Form

Geometry continues to reign supreme in commercial design, with both complex structures and pared-down stripes commanding focus. Overall, this season's offerings put forth a more streamlined vision than recent super-complex layouts. These frameworks offer a playground for color and weave, from bold contrasts to subtle tonalities. Classic forms are reimaged with texture, transparency, and graphic precision, creating patterns that feel at once disciplined and dynamic.

LOOKS

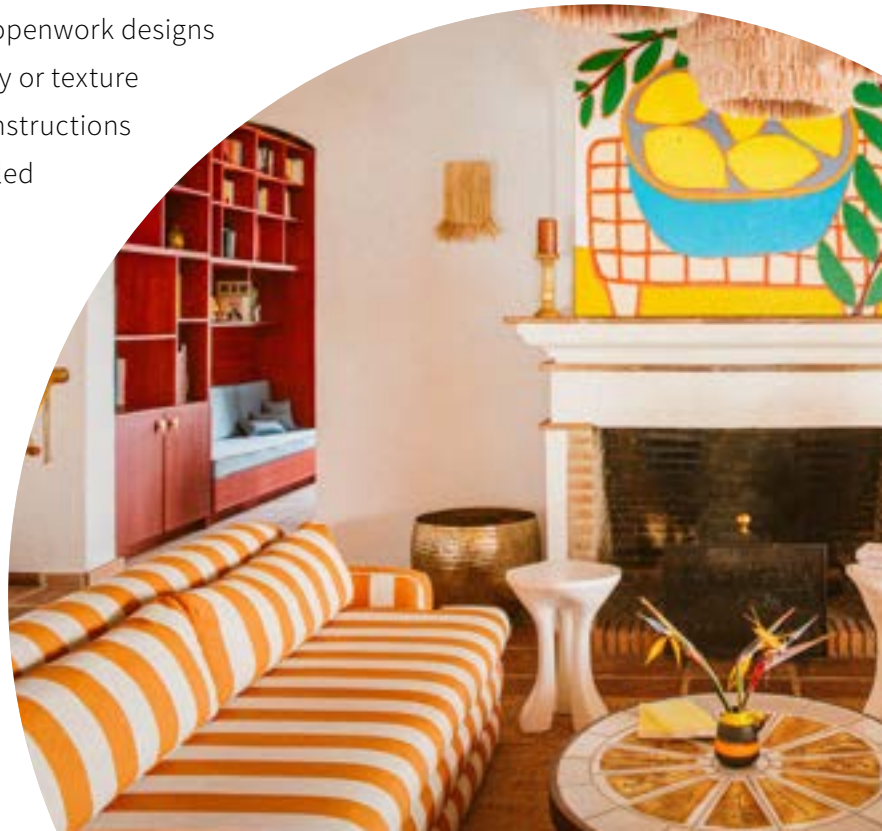
Graphic outlines shifting between filled-in & openwork designs

Hard-edged repeats softened by transparency or texture

Color-blocking, overlays & striés in woven constructions

Familiar shapes are bisected, cut & reassembled

Stripes, checkers, diamonds & grids



Victoria-Maria Geyer x Cortijo Genesis



Francesca Müller x Y-Oz



Suzanne Tick x Luum Textiles



Paul Smith x Maharam



Kvadrat



Jeanne & the Forest x Château de Montvillargene



Kvadrat



Wolf-Gordon x Studioestudio

the TEXTILE EYE



Kvadrat



Genster x Ben Soleimani



Momentum



Seema Krish



LebaTex

Fall 2025

SHADES AND PALETTES



Liora Manne



HEX #EBD9C6



HEX #D0A783



HEX #CA7B3D



HEX #834A42



HEX #809CA7



HEX #607DA0



HEX #185E6F

Palette

Copper Mirage

- Copper tones mingle with ivory and camel, shifting fluidly between sun-baked warmth and mineral depth.
- Teal and blue accents cool the palette, evoking the mesmerizing shimmer of a desert mirage.
- Versatile and layered, these shades move easily from richly dramatic to softly weathered.



Francesca Müller x Y-O2



Kravet Contract x Crypton



Wall&decò x Lorenzo de Grandis



Jiun Ho



Arc-Com



Momentum



HEX #D4C9B6



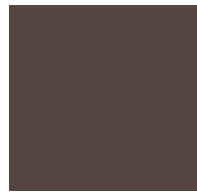
HEX #C1AFB2



HEX #B19886



HEX #887568



HEX #574542



DEDON

the TEXTILE EYE

Palette

Chinchilla Tone

- Cooler browns with subtle mauve and silvery undertones define this season's evolution of neutrals.
- Refined and nuanced, they bring a polished and elevated restraint.
- Used both as anchors and in supporting roles, these mink-like shades appear across collections, versatile in matte, lustrous, or polished finishes.



HBF Textiles



Carlisle & Co.



Supreen



Francesca Müller x Y-O2



thetextileeye.com

Insights for inspired designers